

SKIN BARRIER CREAM

For sensitive, compromised skin

- Dry skin
- Post-procedure
- Sutures
- Cryotherapy

- Burns & sunburns
- Cuts & scrapes
- Peri-oral area
- Diaper area

- Laser hair removal
- External intimate areas
- External mucosae

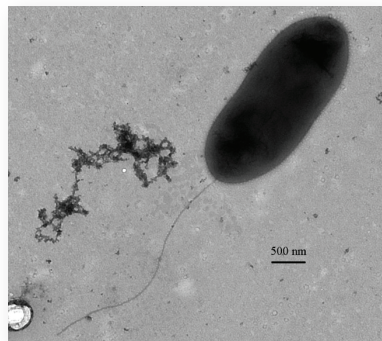
CICALFATE +

RESTORATIVE PROTECTIVE CREAM

Clinically proven, multi-use solution with exclusive postbiotic, C+Restore™, to restore compromised skin barrier and facilitate the recovery process by maintaining an optimal healing environment.

POWERED BY POSTBIOTIC SCIENCE

AQUAPHILUS DOLOMIAE A UNIQUE MICROFLORA IN AVÈNE THERMAL SPRING WATER IS THE SOURCE OF POSTBIOTIC INNOVATION¹



20 YEARS OF RESEARCH

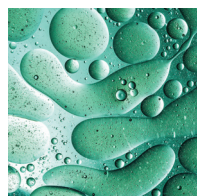
- SOOTHES
- SOFTENS
- CALMS

- Gram-negative, highly flagellated bacteria
- Non-pathogenic



- 0.5 fl.oz. | SRP: \$12
- 1.3 fl.oz. | SRP: \$28
- 3.3 fl.oz. | SRP: \$42

OPTIMAL FORMULA



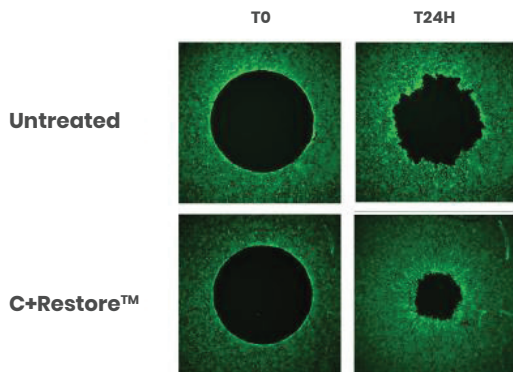
C+RESTORE™ (Aquaphilus Dolomiae Ferment Filtrate)

Bioengineered postbiotic derived from Aquaphilus Dolomiae to help restore skin barrier while balancing the microbiome

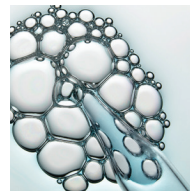


COPPER-ZINC SULFATE

Powerful complex to promote and maintain a healthy environment for optimal skin recovery



2.5X
FASTER SKIN RECOVERY²



AVÈNE THERMAL SPRING WATER (49%)

Clinically proven by 150+ studies to soothe, soften and calm sensations of discomfort

¹JEADV 2020 Supplement Volume 34, Supplement 5, August 2020. There's Something in the Water: Avène Thermal Spring Water and its Signature Microbiota Extracts in Dermatological Practice. ²In vitro comparison of the effect of the new active ingredient vs. untreated on the migration of human HaCaT keratinocytes in a non-supplemented medium at 24 hours.

SKIN BARRIER CREAM

For sensitive, compromised skin

- Dry skin
- Post-procedure
- Sutures
- Cryotherapy

- Burns & sunburns
- Cuts & scrapes
- Peri-oral area
- Diaper area

- Laser hair removal
- External intimate areas
- External mucosae



CICALFATE +

RESTORATIVE PROTECTIVE CREAM



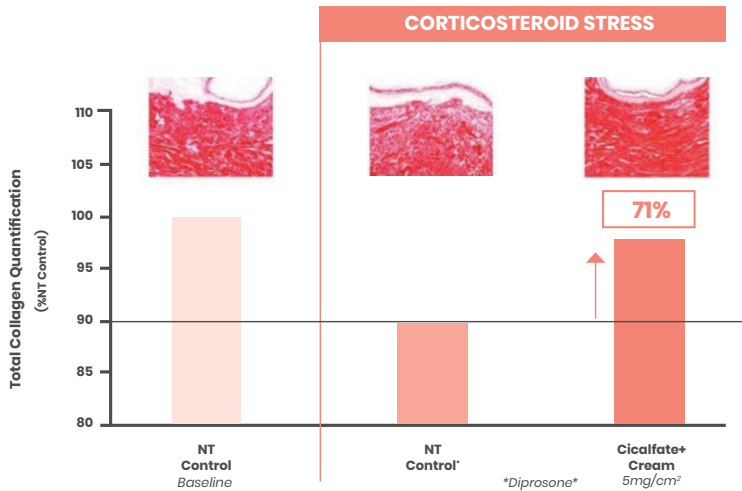
CLINICALLY PROVEN

SUPPORTS HEALTHY COLLAGEN ENVIRONMENT³

Study on 6 human skin explant models. Stressed with application of topical corticosteroid*. Daily topical treatment post-stress. Measurement of collagen in skin with just corticosteroid* vs. skin with corticosteroid* and Cicalfate+ Cream.

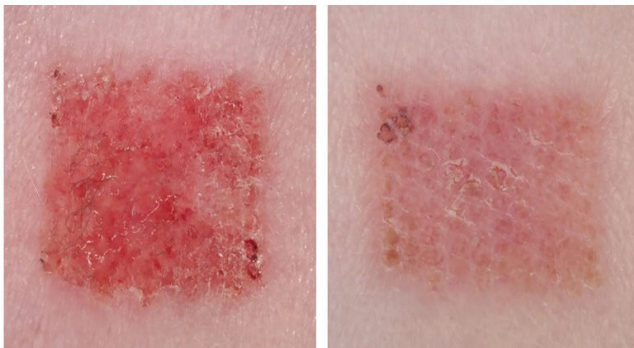


VIEW SCIENTIFIC POSTER



VISIBLE IMPROVEMENT IN 2 DAYS⁴

De-epidermization by Ebium YAG Laser. Application of Cicalfate+ Cream at day 2.



WITHOUT CICALFATE+ CREAM

WITH CICALFATE+ CREAM

PERI-ORAL AREA⁵

Application of Cicalfate+ Cream twice daily for 22 days.



BEFORE

AFTER

POST-CRYOTHERAPY⁵

Application of Cicalfate+ Cream twice daily for 22 days.



BEFORE

AFTER

BURN CARE⁶ (Pressure Cooker Accident)

Application of Cicalfate+ Cream in association with Silver Sulfadiazine, twice daily for 1 week. Followed by only Cicalfate+ Cream until the burn has completely restored.



BEFORE

AFTER

ECZEMA-PRONE SKIN⁶

Application of Cicalfate+ Cream in association with Tacrolimus 0.1% and Doxycycline.



BEFORE

AFTER

PARABEN-FREE | FRAGRANCE-FREE | SILICONE-FREE | NON-COMEDOGENIC | FORMULATED TO MINIMIZE RISKS OF ALLERGIC REACTIONS

³Data on file at Pierre Fabre on all studies conducted on Cicalfate+ Restorative Protective Cream. ⁴Comparative study on 20 subjects following de-epidermization by Ebium YAG Laser on front surface of forearms. Application of Cicalfate+ for 21 days. 1 semi-occlusive application daily from D1 to D6. 2 open applications daily from D7 to D21. p<0.0001 vs. untreated skin. ⁵Open, monocenter study. Self-scoring under dermatological, pediatric, gynecological control on 88 subjects. 2 applications per day for 22 days. Results taken before application, immediately after application, D3, D8 and D22. ⁶International clinical cases challenge; prescription of products from Cicalfate+ collection to manage real-life irritation cases.